

How to Contact

- ❑ Contact with the Obstetric Shared Care Midwives is only a phone call away.
- ❑ Either you or your GP can call following confirmation of your pregnancy to make your first appointment at the Hospital. Your appointment should be before 20 weeks of pregnancy.
- ❑ If you would like further information please phone the Obstetric Shared Care Midwife at your preferred Hospital.

Flinders Medical Centre

Sue Coppi

Phone: 8204 5511 Pager 20109

Gawler Health Service

Lisa Frahm

Phone: 8521 2060

Lyell McEwin Health Service

Jenny Miller

Phone: 8182 9000 Pager 6470

Modbury Public Hospital

Julie Sieben

Phone: 8161 2227

The Queen Elizabeth Hospital

Jenny Miller

Phone: 8222 6000 Pager 6470

The Women's & Children's Hospital

Lyn Langley

Phone: 8161 7000 Pager 4259



The Statewide GP Obstetric Shared Care Program is funded by the Department of Health. For further details on the Program please contact:

Kate Leeder

Statewide GP Obstetric Shared Care Program

SA Divisions of General Practice Inc.

1st floor, 66 Greenhill Road,

Wayville SA 5034

Ph: 8271 8988

Fax: 8271 8344

Email: kate.leeder@sadi.org.au

Web: www.sadi.org.au



© Statewide GP Obstetric Shared Care Program July 2005

Statewide GP Obstetric Shared Care Program

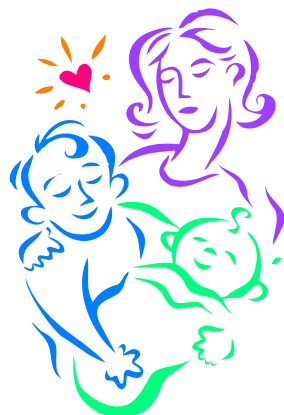


Are You Pregnant?

- ✓ Are you planning to have your baby at a public hospital?
- ✓ Would you like your GP (General Practitioner) involved in your antenatal care?
- ✓ If you answer Yes to any of these questions, read on.....

Who is the Program For?

- ❑ Women who want to see their own doctor (GP) for pregnancy care and give birth to their baby at the public hospital of their choice.
- ❑ Working women who are unable to attend appointments easily during hospital clinic hours.
- ❑ Women with young families.
- ❑ Women with limited transport to attend hospital clinics.
- ❑ Women who reside in rural or remote areas.



About the Program

- ❑ The GP Obstetric Shared Care Program is a model of pregnancy care available for women birthing at any public hospital in South Australia. It is funded by the Department of Health.
- ❑ Your GP needs to be accredited with the Program. If you do not have a GP, the Midwife Co-ordinator may assist you with finding an accredited GP.
- ❑ Your GP will provide most of your care during your pregnancy, with only 2 or 3 appointments at the hospital. Your care during labour, birth and immediately afterwards will be given by hospital doctors and midwives.
- ❑ If any complications develop during your pregnancy, your GP will refer you back to the hospital for any specialist care.
- ❑ There is a Midwife Co-ordinator who will liaise with you and your family, your GP, the hospital and other agencies as necessary.
- ❑ Confidentiality is maintained.

Advantages of GP Obstetric Shared Care

- ❑ Seeing the same doctor (your GP) for most of your antenatal visits.
- ❑ Knowing your doctor, and they know your medical history.
- ❑ Access to community supports.
- ❑ Access to postnatal support for feeding difficulties and any other problems.
- ❑ Convenience of appointment times.
- ❑ Direct interlinking with hospital services.
- ❑ Usually shorter waiting times compared with the hospital.
- ❑ Your doctor's surgery is usually closer to home or work.
- ❑ Your doctor's surgery usually has easier car parking than the hospital.

